

## C4orf31 Antibody

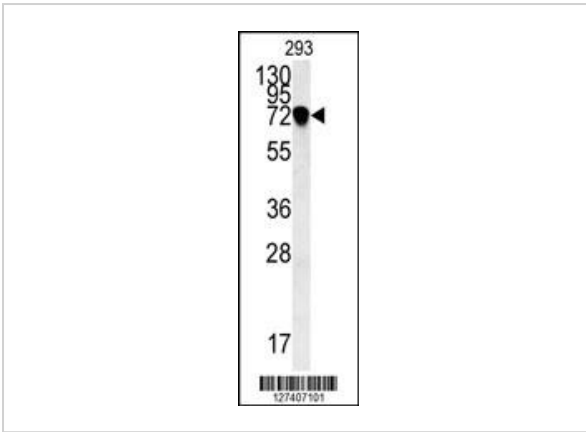
CATALOG NUMBER: 62-056

### Specifications

<b>Host Species</b>	Rabbit
<b>Species Reactivity</b>	Human
<b>Immunogen</b>	This C4orf31 antibody is generated from rabbits immunized with a KLH conjugated synthetic peptide between 80-109 amino acids from the N-terminal region of human C4orf31.
<b>Conjugate</b>	Unconjugated
<b>Tested Applications</b>	Flow, IHC-P, WB
<b>User Note</b>	Optimal dilutions for each application to be determined by the researcher.
<b>Predicted Molecular Weight</b>	65 kDa

### Properties

<b>Purification</b>	This antibody is purified through a protein A column, followed by peptide affinity purification.
<b>Clonality</b>	Polyclonal
<b>Isotype</b>	Rabbit Ig
<b>Physical State</b>	Liquid
<b>Buffer</b>	Supplied in PBS with 0.09% (W/V) sodium azide.
<b>Concentration</b>	batch dependent
<b>Storage Conditions</b>	Store at 4°C for three months and -20°C, stable for up to one year. As with all antibodies care should be taken to avoid repeated freeze thaw cycles. Antibodies should not be exposed to prolonged high temperatures.



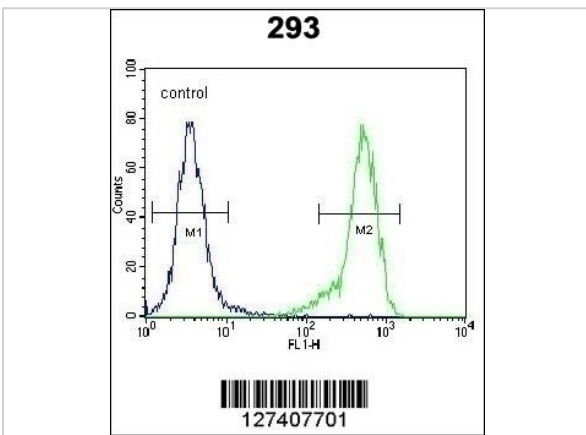
### C4orf31 Antibody 1

Western blot analysis in 293 cell line lysates (35ug/lane).



### C4orf31 Antibody 2

C4orf31 Antibody immunohistochemistry analysis in formalin fixed and paraffin embedded human lung carcinoma followed by peroxidase conjugation of the secondary antibody and DAB staining.



### C4orf31 Antibody 3

Flow cytometric analysis of 293 cells (right histogram) compared to a negative control cell (left histogram). FITC-conjugated goat-anti-rabbit secondary antibodies were used for the analysis.

## Disclaimer

#### Disclaimer

Optimal dilutions/concentrations should be determined by the end user. The information provided is a guideline for product use. This product is for research use only.

For research use only. For additional information, visit ProSci's [Terms and Conditions Page](#).