

Crot Antibody

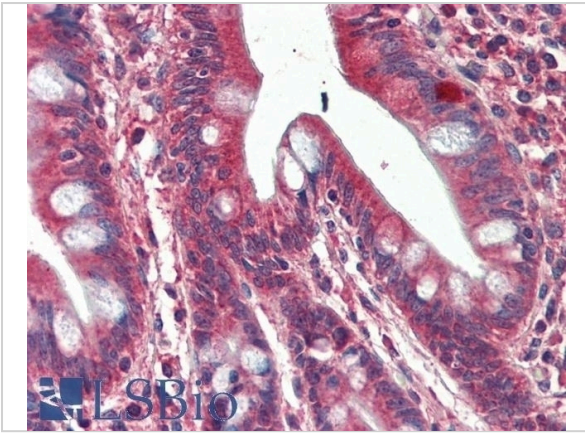
CATALOG NUMBER: 42-406

Specifications

Host Species	Goat
Species Reactivity	Human, Rat
Immunogen	The immunogen for this antibody is: RSCLETDAEKLVE
Conjugate	Unconjugated
Tested Applications	ELISA, IHC, WB

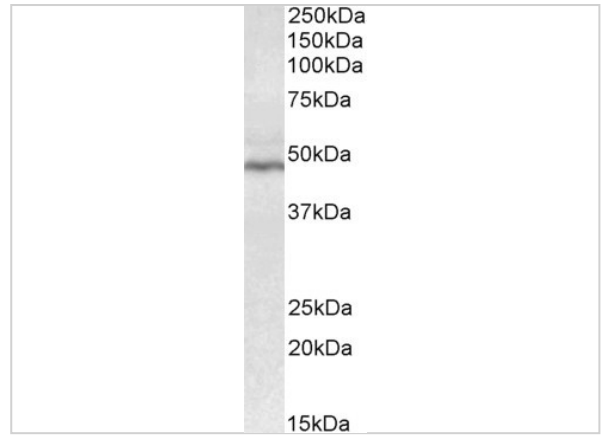
Properties

Purification	Purified from goat serum by ammonium sulphate precipitation followed by antigen affinity chromatography using the immunizing peptide.
Clonality	Polyclonal
Physical State	Liquid
Buffer	Supplied at 0.5 mg/ml in Tris saline, 0.02% sodium azide, pH7.3 with 0.5% bovine serum albumin. Aliquot and store at -20°C. Minimize freezing and thawing.
Concentration	500 ug/mL
Storage Conditions	Aliquot and store at -20°C. Minimize freezing and thawing.



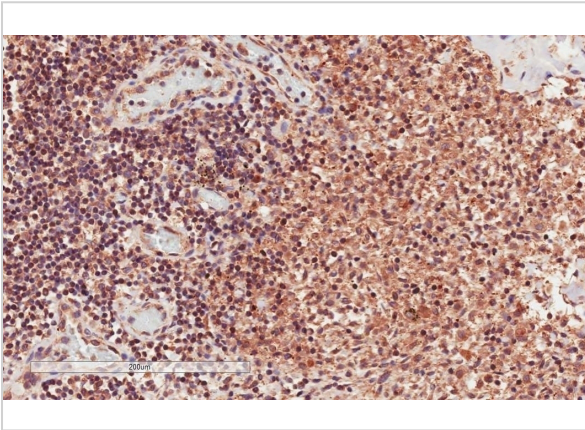
Crot Antibody 1

42-406 (0.3ug/ml) staining of Rat Kidney lysate (35ug protein in RIPA buffer). Detected by chemiluminescence.



Crot Antibody 2

42-406 (5ug/ml) staining of paraffin embedded Human Cortex. Steamed antigen retrieval with citrate buffer pH 6, AP-staining.



Crot Antibody 3

42-406 (5ug/ml) staining of paraffin embedded Human Liver. Steamed antigen retrieval with citrate buffer pH 6, AP-staining.

Disclaimer

Disclaimer

Optimal dilutions/concentrations should be determined by the end user. The information provided is a guideline for product use. Optimal dilutions/concentrations should be determined by the end user. The information provided is a guideline for product use. This product is for research use only.

For research use only. For additional information, visit ProSci's [Terms and Conditions Page](#).