

## CTRP1 Antibody

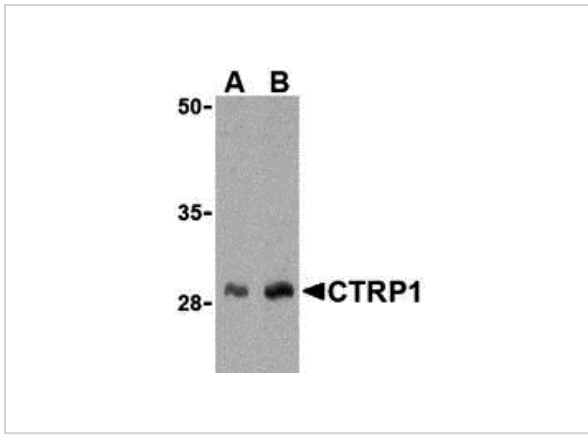
CATALOG NUMBER: 3557

### Specifications

<b>Host Species</b>	Rabbit
<b>Species Reactivity</b>	Human, Mouse, Rat
<b>Immunogen</b>	CTRP1 (NT) antibody was raised against a 15 amino acid synthetic peptide from near the amino-terminus of human CTRP1. The immunogen is located within amino acids 40 - 90 of CTRP1.
<b>Conjugate</b>	Unconjugated
<b>Tested Applications</b>	ELISA, IF, IHC-P, WB
<b>User Note</b>	Optimal dilutions for each application to be determined by the researcher.
<b>Specificity</b>	These proteins are often highly modified post-translationally and migrate in SDS-PAGE at positions other than their predicted size.

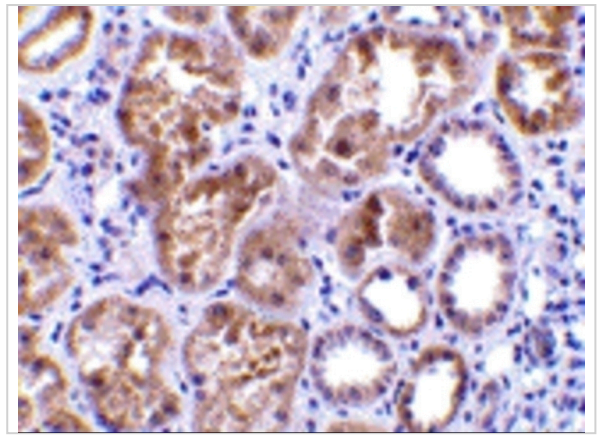
### Properties

<b>Purification</b>	CTRP1 Antibody is affinity chromatography purified via peptide column.
<b>Clonality</b>	Polyclonal
<b>Isotype</b>	IgG
<b>Physical State</b>	Liquid
<b>Buffer</b>	CTRP1 Antibody is supplied in PBS containing 0.02% sodium azide.
<b>Concentration</b>	1 mg/mL
<b>Storage Conditions</b>	CTRP1 antibody can be stored at 4°C for three months and -20°C, stable for up to one year. As with all antibodies care should be taken to avoid repeated freeze thaw cycles. Antibodies should not be exposed to prolonged high temperatures.



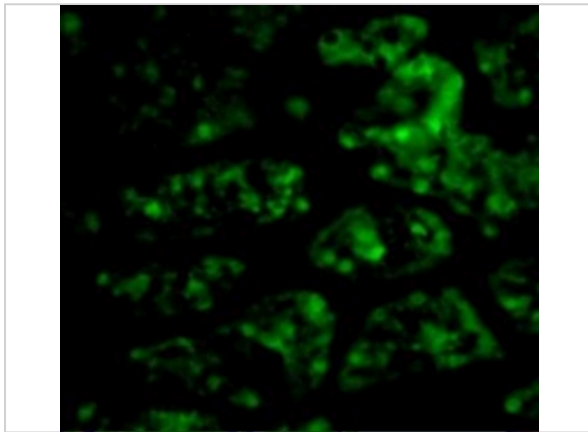
### CTRP1 Antibody 1

Western blot analysis of CTRP1 in human kidney cell lysate with CTRP1 antibody at (A) 1 and (B) 2 µg/mL.



### CTRP1 Antibody 2

Immunohistochemistry of CTRP1 in human kidney tissue with CTRP1 antibody at 10 µg/mL.



### CTRP1 Antibody 3

Immunofluorescence of CTRP1 in Human Kidney cells with CTRP1 antibody at 20 µg/mL.

## Disclaimer

<p><b>Disclaimer</b></p>	<p>Optimal dilutions/concentrations should be determined by the end user. The information provided is a guideline for product use. This product is for research use only.</p>
--------------------------	---

For research use only. For additional information, visit ProSci's [Terms and Conditions Page](#).