

## CYP4A22 Antibody

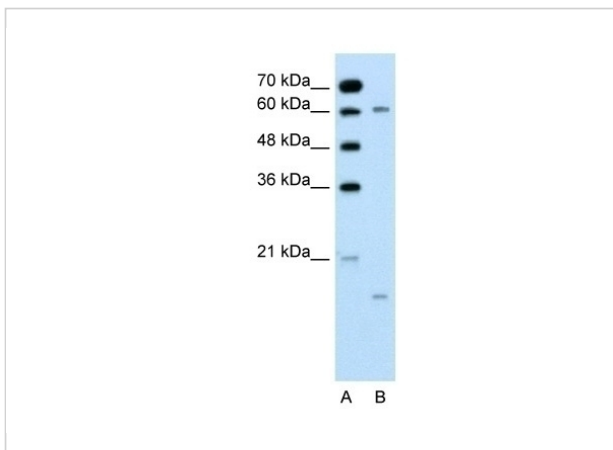
CATALOG NUMBER: 29-654

### Specifications

<b>Host Species</b>	Rabbit
<b>Species Reactivity</b>	Human
<b>Immunogen</b>	Antibody produced in rabbits immunized with a synthetic peptide corresponding a region of human CYP4A22.
<b>Conjugate</b>	Unconjugated
<b>Tested Applications</b>	ELISA, IHC, WB
<b>User Note</b>	Optimal dilutions for each application to be determined by the researcher.
<b>Predicted Molecular Weight</b>	57 kDa

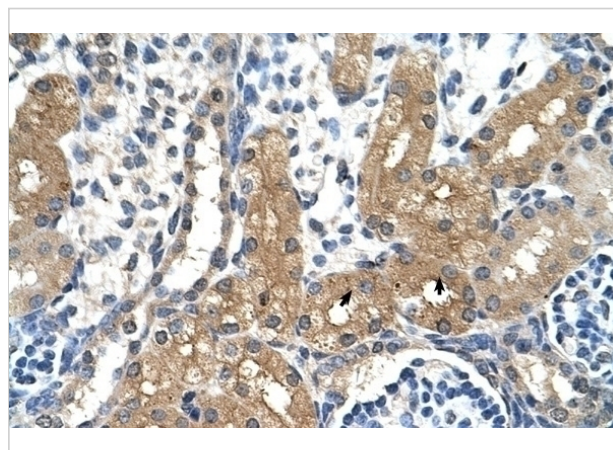
### Properties

<b>Purification</b>	Antibody is purified by peptide affinity chromatography method.
<b>Clonality</b>	Polyclonal
<b>Physical State</b>	Liquid
<b>Buffer</b>	Purified antibody supplied in 1x PBS buffer with 0.09% (w/v) sodium azide and 2% sucrose.
<b>Concentration</b>	batch dependent
<b>Storage Conditions</b>	For short periods of storage (days) store at 4°C. For longer periods of storage, store CYP4A22 antibody at -20°C. As with any antibody avoid repeat freeze-thaw cycles.



### CYP4A22 Antibody 1

Antibody used in WB on Human Jurkat 0.2-1 ug/ml.



### CYP4A22 Antibody 2

Antibody used in IHC on Human Kidney at 4.0-8.0 ug/ml.

## Disclaimer

<b>Disclaimer</b>	This product is for research use only.
-------------------	--

For research use only. For additional information, visit ProSci's [Terms and Conditions Page](#).