

HLA-E Antibody

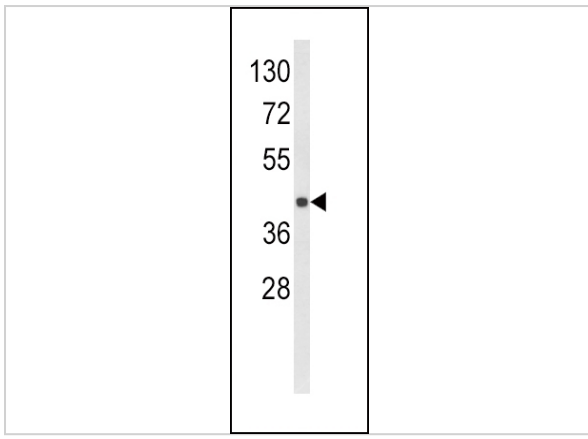
CATALOG NUMBER: 63-499

Specifications

Host Species	Rabbit
Species Reactivity	Human
Immunogen	This HLA-E antibody is generated from rabbits immunized with a KLH conjugated synthetic peptide between 108-135 amino acids from the Central region of human HLA-E.
Conjugate	Unconjugated
Tested Applications	WB
User Note	Optimal dilutions for each application to be determined by the researcher.
Predicted Molecular Weight	40 kDa

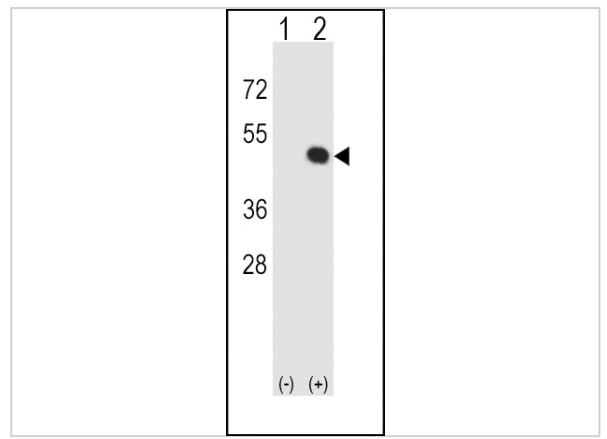
Properties

Purification	This antibody is purified through a protein A column, followed by peptide affinity purification.
Clonality	Polyclonal
Isotype	Rabbit Ig
Physical State	Liquid
Buffer	Supplied in PBS with 0.09% (W/V) sodium azide.
Concentration	batch dependent
Storage Conditions	Store at 4°C for three months and -20°C, stable for up to one year. As with all antibodies care should be taken to avoid repeated freeze thaw cycles. Antibodies should not be exposed to prolonged high temperatures.



HLA-E Antibody 1

Western blot analysis of HLA-E Antibody in MDA-MB231 cell line lysates (35ug/lane)



HLA-E Antibody 2

Western blot analysis of HLA-E using rabbit polyclonal HLA-E Antibody using 293 cell lysates (2 ug/lane) either nontransfected (Lane 1) or transiently transfected (Lane 2) with the HLA-E gene.

Disclaimer

Disclaimer	Optimal dilutions/concentrations should be determined by the end user. The information provided is a guideline for product use. This product is for research use only.
-------------------	--

For research use only. For additional information, visit ProSci's [Terms and Conditions Page](#).