

LRP2 Antibody

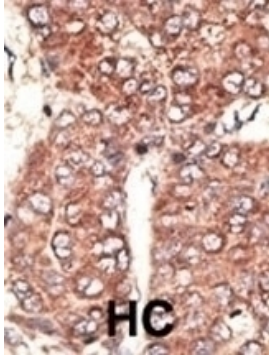
CATALOG NUMBER: 62-144

Specifications

Host Species	Rabbit
Species Reactivity	Human
Immunogen	This LRP2 (Megalin) antibody is generated from rabbits immunized with a KLH conjugated synthetic peptide between 4626-4655 amino acids from the C-terminal region of human LRP2 (Megalin).
Conjugate	Unconjugated
Tested Applications	IHC-P
User Note	Optimal dilutions for each application to be determined by the researcher.
Predicted Molecular Weight	522 kDa

Properties

Purification	This antibody is prepared by Saturated Ammonium Sulfate (SAS) precipitation followed by dialysis
Clonality	Polyclonal
Isotype	Rabbit Ig
Physical State	Liquid
Buffer	Supplied in PBS with 0.09% (W/V) sodium azide.
Concentration	batch dependent
Storage Conditions	Store at 4°C for three months and -20°C, stable for up to one year. As with all antibodies care should be taken to avoid repeated freeze thaw cycles. Antibodies should not be exposed to prolonged high temperatures.



LRP2 Antibody 1

Formalin-fixed and paraffin-embedded human cancer tissue reacted with the primary antibody, which was peroxidase-conjugated to the secondary antibody, followed by AEC staining. BC = breast carcinom...

Disclaimer

Disclaimer	Optimal dilutions/concentrations should be determined by the end user. The information provided is a guideline for product use. This product is for research use only.
-------------------	------------------------------------------------------------------------------------------------------------------------------------------------------------------------

For research use only. For additional information, visit ProSci's [Terms and Conditions Page](#).