

## RBI Antibody

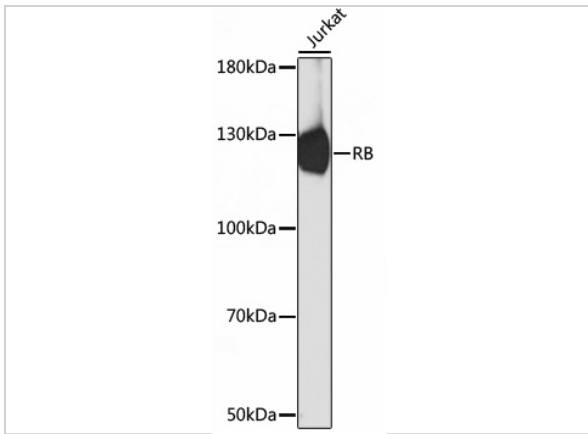
CATALOG NUMBER: 16-832

### Specifications

<b>Host Species</b>	Rabbit
<b>Species Reactivity</b>	Human, Rat
<b>Immunogen</b>	Recombinant protein of human RB1.
<b>Conjugate</b>	Unconjugated
<b>Tested Applications</b>	IF, IHC, WB
<b>User Note</b>	Optimal dilutions for each application to be determined by the researcher.
<b>Predicted Molecular Weight</b>	Observed: 110kDa

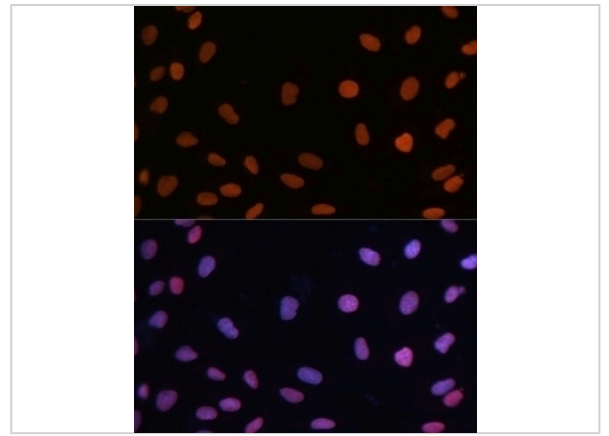
### Properties

<b>Purification</b>	Affinity purification
<b>Clonality</b>	Polyclonal
<b>Isotype</b>	IgG
<b>Physical State</b>	Liquid
<b>Buffer</b>	PBS with 0.02% sodium azide, 50% glycerol, pH7.3.
<b>Concentration</b>	batch dependent
<b>Storage Conditions</b>	Store at -20°C. Avoid freeze / thaw cycles.



## RB1 Antibody 1

Immunofluorescence analysis of U-2 OS cells using Rb antibody (16-832) at dilution of 1:100. Blue: DAPI for nuclear staining.



## RB1 Antibody 2

Western blot analysis of extracts of Jurkat cells, using Rb antibody (16-832) at 1:1000 dilution.

Secondary antibody: HRP Goat Anti-Rabbit IgG (H+L) at 1:10000 dilution.

Lysates/proteins: 2...

## Disclaimer

<p><b>Disclaimer</b></p>	<p>Optimal dilutions/concentrations should be determined by the end user. The information provided is a guideline for product use. This product is for research use only.</p>
--------------------------	---

For research use only. For additional information, visit ProSci's [Terms and Conditions Page](#).