

## Klotho Antibody (biotin)

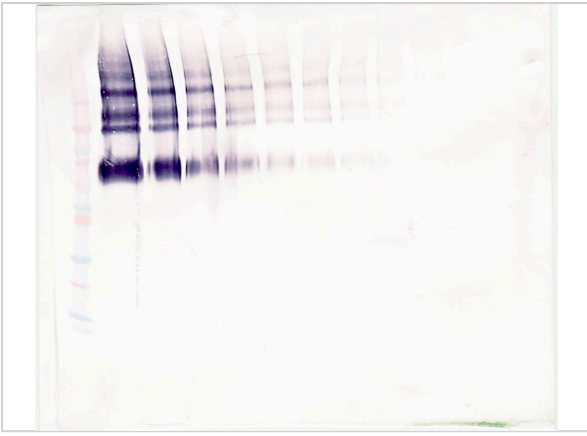
CATALOG NUMBER: 38-349

### Specifications

<b>Host Species</b>	Rabbit
<b>Species Reactivity</b>	Human
<b>Immunogen</b>	Produced from sera of rabbits pre-immunized with highly pure (>98%) recombinant hKlotho. Anti-Human Klotho specific antibody was purified by affinity chromatography and then biotinylated.
<b>Conjugate</b>	Biotin
<b>Tested Applications</b>	ELISA, WB
<b>User Note</b>	Centrifuge vial prior to opening.

### Properties

<b>Purification</b>	Klotho specific antibody was purified by affinity chromatography and then biotinylated
<b>Clonality</b>	Polyclonal
<b>Physical State</b>	Lyophilized
<b>Concentration</b>	batch dependent
<b>Storage Conditions</b>	Antibody is stable for at least 2 years from date of receipt at -20°C. The reconstituted antibody is stable for at least two weeks at 2-8°C. Frozen aliquots are stable for at least 6 months when stored at -20°C. Avoid repeated freeze-thaw cycles.



## Klotho Antibody (biotin) 3

To detect hKlotho by sandwich ELISA (using 100 µl/well antibody solution) a concentration of 0.25 – 1.0 µg/ml of this antibody is required. This biotinylated polyclonal antibody, in conjunction wit...

## Disclaimer

---

<b>Disclaimer</b>	Optimal dilutions/concentrations should be determined by the end user. The information provided is a guideline for product use. Optimal dilutions/concentrations should be determined by the end user. The information provided is a guideline for product use. This product is for research use only.
-------------------	--

For research use only. For additional information, visit ProSci's [Terms and Conditions Page](#).