

Tau (phospho Ser404) Antibody

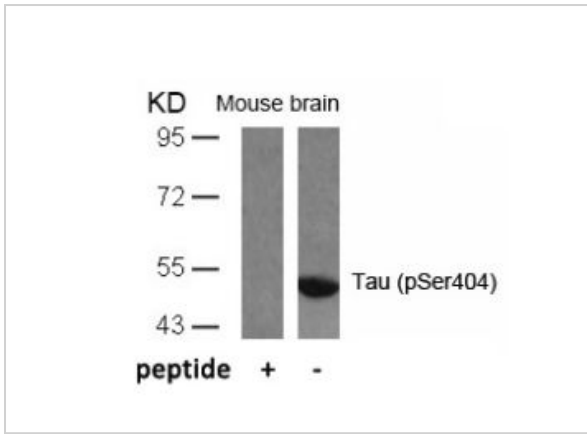
CATALOG NUMBER: 79-153

Specifications

Host Species	Rabbit
Species Reactivity	Human, Mouse, Rat
Immunogen	Tau (Phospho-Ser404) antibody was raised against a peptide sequence around phosphorylation site of serine 404 (D-T-S (p) -P-R) derived from Human Tau.
Conjugate	Unconjugated
Tested Applications	IF, IHC, WB
Specificity	This antibody detects endogenous level of Tau only when phosphorylated at serine 404.
Predicted Molecular Weight	48, 62, 78 kDa

Properties

Purification	Antibodies were purified by affinity-chromatography using epitope-specific phosphopeptide. Non-phospho specific antibodies were removed by chromatography using non-phosphopeptide.
Clonality	Polyclonal
Physical State	Liquid
Buffer	Antibody supplied in phosphate buffered saline (without Mg ²⁺ and Ca ²⁺), pH 7.4, 150mM NaCl, 0.02% sodium azide and 50% glycerol.
Concentration	1 mg/mL
Storage Conditions	Store antibody at -20°C for up to one year.



Tau (phospho Ser404) Antibody 1

Western blot analysis of lysed extracts from mouse brain tissue using Tau (Phospho-Ser404).



Tau (phospho Ser404) Antibody 2

Top Image: Immunohistochemical analysis of paraffin-embedded rat hippocampal region tissue from a model with Alzheimer's Disease using Tau (Phospho-Ser404). **Bottom Image:** Immunofluorescence analysis of the same tissue.

Disclaimer

Disclaimer	Optimal dilutions/concentrations should be determined by the end user. The information provided is a guideline for product use. This product is for research use only.
-------------------	--

For research use only. For additional information, visit ProSci's [Terms and Conditions Page](#).

For full product information: