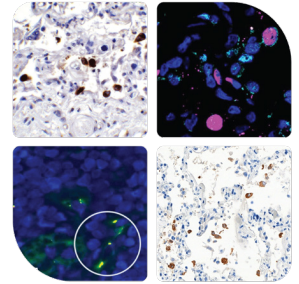


COVID-19 Patient Sample Validated Antibodies

ProSci is the leading supplier in antibodies and proteins for COVID-19 research. With a considerable list of antibodies, ProSci enhances research efforts globally to understand this new virus and its health effects.

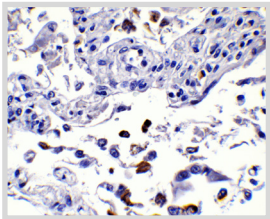
We have validated antibodies to all four structural proteins and many non-structural SARS-CoV-2 proteins by IHC with COVID-19 positive patient tissue samples, showing that these antibodies can detect the virus itself. See below for more information on these products.



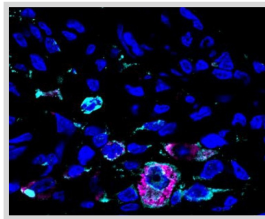
Select Spike S1, S2, and RBD Antibodies

Product	Cat. No.	Clonality	Host	Tested Applications
SARS-CoV-2 (COVID-19) Spike S1 Antibody	9083	Polyclonal	Rabbit	E, WB, IHC, IF
SARS-CoV-2 (COVID-19) Spike S2 Antibody	3525 , 9123	Polyclonal	Rabbit	E, WB, IHC, IF
SARS-CoV-2 (COVID-19) Spike RBD Antibody	9087	Polyclonal	Rabbit	WB, IHC, Flow

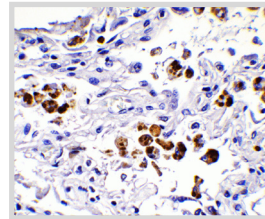
For a complete list of Spike S1, S2, and RBD antibodies visit us at prosci-inc.com



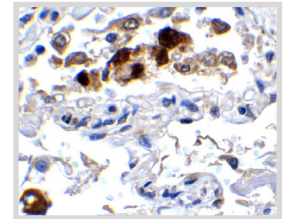
SARS-CoV-2 Spike S1 Antibody
Cat. No. 9083
IHC validation with SARS-CoV-2 Spike S1 in COVID-19 Patient Lung at 0.5 ug/ml.



SARS-CoV-2 Spike Antibody
Cat. No. 3525
IF validation of Spike antibody in SARS-CoV-2 infected Lung Tissue (Singh et al., Nature Microbiology, 2021)



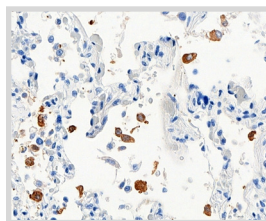
SARS-CoV-2 Spike S2 Antibody
Cat. No. 9123
IHC validation of SARS-CoV-2 Spike S2 in COVID-19 Patient Lung.



SARS-CoV-2 Spike S1 Antibody
Cat. No. 9083
IHC validation of SARS-CoV-2 Spike S1 in COVID-19 Patient Lung.

SARS-CoV-2 Nucleocapsid Antibody

Product	Cat. No.	Clonality	Host	Tested Applications
SARS-CoV-2 (COVID-19) Nucleocapsid Antibody	9099	Polyclonal	Rabbit	E, WB, IHC



SARS-CoV-2 Nucleocapsid Antibody
Cat. No. 9099
IHC validation of SARS-CoV-2 Nucleocapsid in COVID-19 Patient Lung Tissue.

ProSci Incorporated

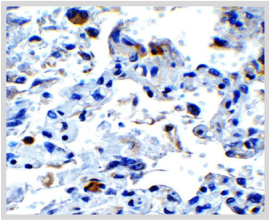
12170 Flint Place, Poway, CA 92064, USA

prosci-inc.com | info@prosci-inc.com | Phone: (858) 513 2638

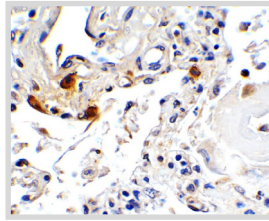
Select Envelope Antibodies

Product	Cat. No.	Clonality	Host	Tested Applications
SARS-CoV-2 (COVID-19) Envelope Antibody	9169	Polyclonal	Rabbit	E, WB, IHC
SARS-CoV-2 (COVID-19, 2019-nCoV) Envelope Antibody	3531	Polyclonal	Rabbit	E, IHC, IF

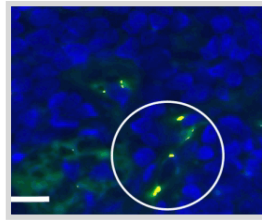
For a complete list of Envelope antibodies visit us at prosci-inc.com



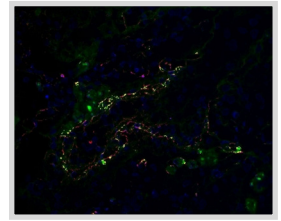
SARS-CoV-2 Envelope Antibody
Cat. No. 9169
IHC validation of SARS-CoV-2 Envelope in COVID-19 Patient Lung.



SARS-CoV-2 Envelope Antibody
Cat. No. 3531
IHC validation of SARS-CoV-2 Envelope antibody in COVID-19 Patient Lung.



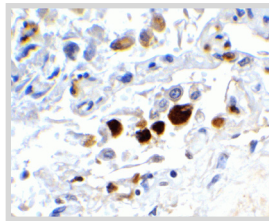
SARS-CoV-2 Envelope Antibody
Cat. No. 3531
IF validation of SARS-CoV-2 Envelope in COVID-19 Patient Skin (Magro et al., 2020).



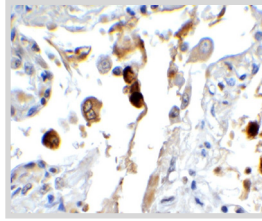
SARS-CoV-2 Envelope Antibody
Cat. No. 3531
Co-expression of SARS-CoV-2 Envelope and C5b-9 in Human Lung Tissue from COVID-19 Patient.

Select Membrane Antibodies

Product	Cat. No.	Clonality	Host	Tested Applications
SARS-CoV-2 (COVID-19) Membrane Antibody	9157 , 9165	Polyclonal	Rabbit	E, WB, IHC



SARS-CoV-2 Membrane Antibody
Cat. No. 9157
IHC validation of SARS-CoV-2 Membrane in COVID-19 Patient Lung.



SARS-CoV-2 Membrane Antibody
Cat. No. 9165
IHC validation of SARS-CoV-2 Membrane in COVID-19 Patient Lung.

Select NSP Antibodies

Product	Cat. No.
SARS-CoV-2 (COVID-19) Spike NSP2 Antibody	9173
SARS-CoV-2 (COVID-19) Spike NSP5 Antibody	9153
SARS-CoV-2 (COVID-19) Spike NSP7 Antibody	9155
SARS-CoV-2 (COVID-19) Spike NSP8 Antibody	9159
SARS-CoV-2 (COVID-19) Spike NSP9 Antibody	9161

Product	Cat. No.
SARS-CoV-2 (COVID-19) Spike NSP10 Antibody	9179
SARS-CoV-2 (COVID-19) Spike NSP13 Antibody	9181 , 9183
SARS-CoV-2 (COVID-19) Spike NSP14 Antibody	9185
SARS-CoV-2 (COVID-19) Spike NSP16 Antibody	9271

ProSci Incorporated

12170 Flint Place, Poway, CA 92064, USA

prosci-inc.com | info@prosci-inc.com | Phone: (858) 513 2638

