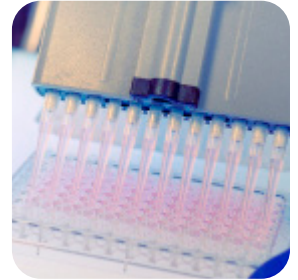




prosci-inc.com



Alzheimer's



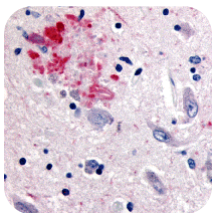
HIGH PERFORMANCE ANTIBODIES ... AND MORE

**Broad Antibody Catalog
Extensive Antibody Services**



ALZHEIMER'S

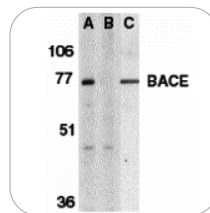
Alzheimer's disease (AD) is the most common form of dementia, accounting for more than half of all cases. Brains affected by AD show neurofibrillary tangles within nerve cells caused by hyperphosphorylated tau and neuritic plaques between cells caused by amyloid β ($A\beta$), a cleavage product of APP. ProSci offers high performance antibodies as well as other reagents for AD research.



APP Antibody

Cat. No. 2133

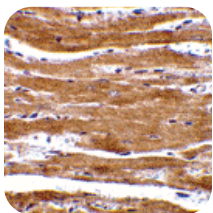
IHC of APP antibody in human brain (Alzheimer's disease) tissue



BACE Antibody

Cat. No. 2253

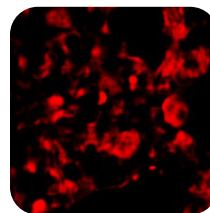
WB of BACE antibody in human brain tissue lysate (A) with or (B) without blocking peptide and in (C) 3T3 cell lysate



BACE2 Antibody

Cat. No. 2247

IHC of BACE2 antibody in mouse heart



PEN2 Antibody

Cat. No. 3981

IF of PEN2 antibody in rat lung tissue



TRIAL SIZES AVAILABLE

prosci-inc.com/promotions/trial-size

ProSci Ψ ™

Detection Sets

ProSci offers curated sets of antibodies for researchers exploring new pathways to detect a large number of biomarkers at a reasonable prices. The Alzheimer detection sets provide antibodies for well known proteins known to be involved in (dys)-function of this pathway.

Detection Set	Cat. No.	Components
Alzheimer's β -A	PSI-1812	APP (CT), APP ($A\beta$ -NT), BACE, BACE2
Alzheimer's γ -Sec	PSI-1820	APH1, Nicastrin, PEN2, Presenilin1

If you are looking for a specific detection set, paired antibody set for ELISA development, or optimization antibody sets to find the perfect antibody for your application, reach out to the experts at ProSci.

prosci-inc.com/contact-us



Antibody	Cat. No.	Applications	Species
APO-E Antibody	7333	E, WB, IHC	H, M, R
ADAM10 Antibody	2051	E, WB, ICC, IF	H
APH1 Antibody	4001	E, WB	H, M
APPBP2 Antibody	7563	E, WB	H, M, R
Nicastrin Antibody	3983	E, WB, IHC, IF	H, M, R
PICALM Antibody	5553	E, WB, IF	H, M, R
PION Antibody	6161	E, WB, IHC, IF	H, M, R
Presenilin1 Antibody	4203	E, WB, IHC, IF	H, M, R
TMP21 Antibody	3997	E, WB, IHC, IF	H, M, R
Clusterin Antibody	3856	E, WB, IHC	H
Caspase-3 Antibody	3445	E, IHC	H
Caspase-4 Antibody	3451	E, WB, IHC, IF	H, M
Caspase-7 Antibody	3465	E, WB, IHC	H, M, R

Create your own detection sets with our convenient trial size antibodies - 50 μ L trial sizes available



FOR MORE ALZHEIMER'S PRODUCTS
prosci-inc.com/products





prosci-inc.com



CORPORATE HEADQUARTERS

ProSci Incorporated
12170 Flint Place
Poway, CA 92064
USA

CONTACT INFORMATION

Toll Free: (888) 513-9525
Local: (858) 513-2638
Fax: (858) 513-2692
E-Mail: info@prosci-inc.com

HIGH PERFORMANCE ANTIBODIES ... AND MORE

Established in 1998

Over 20,000 Antibodies, Proteins, and other research tools available

Custom Antibody Services available, specializing in Polyclonal, Monoclonal, Rabbit Recombinant Monoclonal, and Single Domain Recombinant Technology