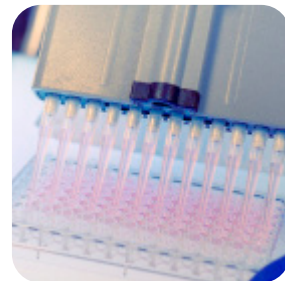




prosci-inc.com



# Apoptosis



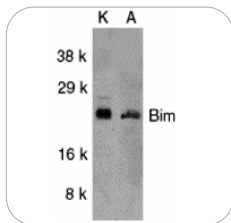
HIGH PERFORMANCE ANTIBODIES ... AND MORE

Broad Antibody Catalog  
Extensive Antibody Services



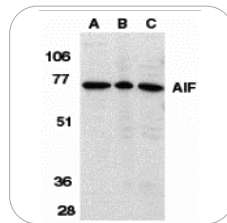
# APOPTOSIS

Apoptosis, or programmed cell death, is critical to various biological processes such as embryonic development, normal cell turnover, and immune system development and functioning. The ability to mediate cell life and death has much therapeutic potential; however, further research is required to elucidate the cellular mechanisms, which influence apoptosis and cell survival. ProSci offers high performance apoptosis antibodies and related reagents.



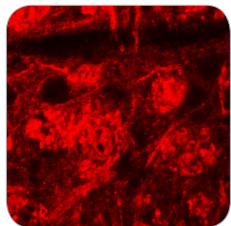
**BIM Antibody**  
Cat. No. 2065

WB of BIM in K562 (K) and A549 (A) whole cell lysates at 1  $\mu$ g/mL.



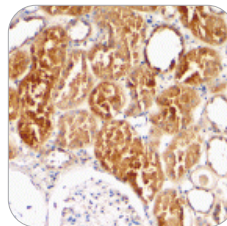
**AIF Antibody**  
Cat. No. 2267

WB analysis of AIF in K562 cell lysate (A), rat heart (B), and mouse heart (C) tissue lysate at 1  $\mu$ g/mL.



**ROCK2 Antibody**  
Cat. No. 6297

IF analysis of ROCK2 in mouse brain tissue at 20  $\mu$ g/mL.



**XIAP Antibody**  
Cat. No. 3331

IHC analysis of XIAP in human kidney tissue at 2  $\mu$ g/mL.



**TRIAL SIZES AVAILABLE**

[prosci-inc.com/promotions/trial-size](http://prosci-inc.com/promotions/trial-size)

**ProSci**  $\Psi$ ™

## Detection Sets

Collection of antibodies for related targets.

Detection Set	Cat. No.	Antibody Components
TRAIL and Receptor	PSI-1801	TRAIL, DR4, DR5, DcR1, DcR2
Inhibitor of Apoptosis	PSI-1815	clAP, ILP-2, Livin, AIP, Survivin, XIAP
Death Domain Receptor	PSI-1825	SAPAP1, SAPAP2, SAPAP3, SAPAP4

## Select Citations

Am J Physiol Cell Physiol (2009). 297: C759-C768. **(FLIP)**  
J Biol Chem (2009). 284: 31616-31624. **(AIF)**  
Cancer Res. (2008). 68: 9394-9404. **(TRAIL)**  
Mol Cell Biol (2007). 27(16): 5673-5685. **(XIAP)**  
J Neurosci (2006). 26(12): 3299-3308. **(DR5)**  
Mol Cell Biol (2006). 26(14): 5421-5435. **(TACE)**  
Immunol (2005). 175: 2555-2562. **(BIM)**  
Clin Canc Res (2003). 9: 5120-5126. **(Survivin)**

Antibody	Cat. No.	Applications	Species
Acinus Antibody	2241	E, WB	H
Bak Antibody	3347	E, WB, ICC	H, M
Bmf Antibody	3029	E, WB, IHC, IF	H
Caspase-4 Antibody	3451	E, WB, IHC, IF	H, M
Caspase-12 Antibody	2325	E, WB, IHC	H, M, R
DAPK2 Antibody	2323	E, WB, IHC	H, M, R
DR5 Antibody	2019	E, WB, ICC, IF	H, M
DNM1L Antibody	7603	E, WB, ICC, IF	H, M
FLIP Antibody	1161	E, WB, ICC	H, M, R
RIP3 Antibody	2283	E, WB, IHC, IF	M, R
Survivin Antibody	2235	E, WB, ICC, IF	H, M, IF
TACE Antibody	1131	E, WB, ICC, IF, FACS	H, M, R
TRAIL-R3 Antibody	2019	E, WB, ICC, IF	H, M, R

... **AND MORE**



**FOR MORE APOPTOSIS PRODUCTS**  
[prosci-inc.com/products](http://prosci-inc.com/products)





prosci-inc.com



#### **CORPORATE HEADQUARTERS**

ProSci Incorporated  
12170 Flint Place  
Poway, CA 92064  
USA

#### **CONTACT INFORMATION**

Toll Free: (888) 513-9525  
Local: (858) 513-2638  
Fax: (858) 513-2692  
E-Mail: [info@prosci-inc.com](mailto:info@prosci-inc.com)

## **HIGH PERFORMANCE ANTIBODIES ... AND MORE**

**Established in 1998**

**Over 20,000 Antibodies, Proteins, and other research tools available**

**Custom Antibody Services available, specializing in Polyclonal, Monoclonal, Rabbit Recombinant Monoclonal, and Single Domain Recombinant Technology**