



# COVID-19 Patient Sample Validation Antibodies

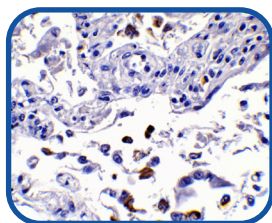
ProSci is the leading supplier in antibodies and proteins for COVID-19 research. With a considerable list of antibodies, ProSci enhances research efforts globally to understand this new virus and its health effects.

We have validated antibodies to all four structural proteins and many non-structural SARS-CoV-2 proteins by IHC with COVID-19 positive patient tissue samples, showing that these antibodies can detect the virus itself. See below for more information on these products.

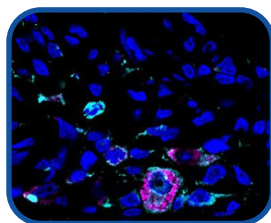
## Select Spike S1, S2, and RBD Antibodies

Product	Cat. No.	Clonality	Host	Tested Applications
SARS-CoV-2 (COVID-19) Spike S1 Antibody	<a href="#">9083</a>	Polyclonal	Rabbit	E, WB, IHC, IF
SARS-CoV-2 (COVID-19) Spike S2 Antibody	<a href="#">3525, 9123</a>	Polyclonal	Rabbit	E, WB, IHC, IF
SARS-CoV-2 (COVID-19) Spike RBD Antibody	<a href="#">9087</a>	Polyclonal	Rabbit	WB, IHC, Flow

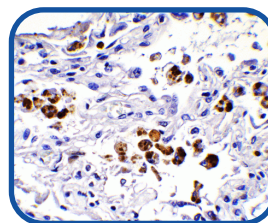
For a complete list of Spike S1, S2, and RBD antibodies visit us at [prosci-inc.com](https://prosci-inc.com)



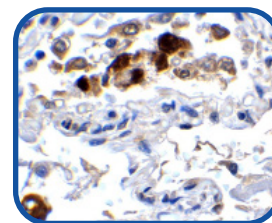
SARS-CoV-2 Spike S1 Antibody  
Cat. No. 9083  
IHC validation with SARS-CoV-2 Spike S1 in COVID-19 Patient Lung at 0.5 ug/ml.



SARS-CoV-2 Spike Antibody  
Cat. No. 3525  
IF validation of Spike antibody in SARS-CoV-2 infected Lung Tissue (Singh et al., Nature Microbiology, 2021)



SARS-CoV-2 Spike S2 Antibody  
Cat. No. 9123  
IHC validation of SARS-CoV-2 Spike S2 in COVID-19 Patient Lung.



SARS-CoV-2 Spike S1 Antibody  
Cat. No. 9083  
IHC validation of SARS-CoV-2 Spike S1 in COVID-19 Patient Lung.

## SARS-CoV-2 Nucleocapsid Antibody

Product	Cat. No.	Clonality	Host	Tested Applications
SARS-CoV-2 (COVID-19) Nucleocapsid Antibody	<a href="#">9099</a>	Polyclonal	Rabbit	E, WB, IHC

Visit [prosci-inc.com](https://prosci-inc.com) for more SARS-CoV-2 Spike antibodies and recombinant proteins

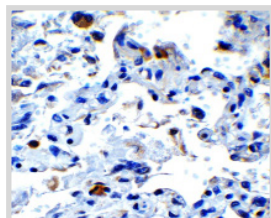


ProSci Incorporated  
12170 Flint Place, Poway, CA 92064, USA  
[prosci-inc.com](https://prosci-inc.com) | [customercare@prosci-inc.com](mailto:customercare@prosci-inc.com) | +1 (858) 513-2638

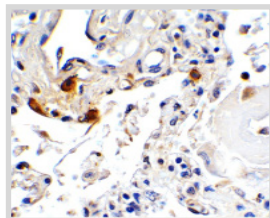
## Select Envelope Antibodies

Product	Cat. No.	Clonality	Host	Tested Applications
SARS-CoV-2 (COVID-19) Envelope Antibody	<a href="#">9169</a>	Polyclonal	Rabbit	E, WB, IHC
SARS-CoV-2 (COVID-19, 2019-nCoV) Envelope Antibody	<a href="#">3531</a>	Polyclonal	Rabbit	E, IHC, IF

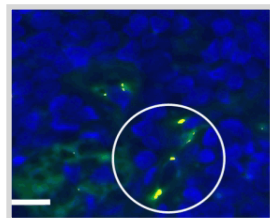
For a complete list of Envelope antibodies visit us at [prosci-inc.com](http://prosci-inc.com)



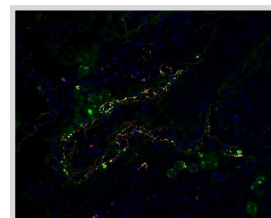
SARS-CoV-2 Envelope Antibody  
Cat. No. 9169  
IHC validation of SARS-CoV-2 Envelope in COVID-19 Patient Lung.



SARS-CoV-2 Envelope Antibody  
Cat. No. 3531  
IHC validation of SARS-CoV-2 Envelope antibody in COVID-19 Patient Lung.



SARS-CoV-2 Envelope Antibody  
Cat. No. 3531  
IF validation of SARS-CoV-2 Envelope in COVID-19 Patient Skin (Magro et al., 2020).



SARS-CoV-2 Envelope Antibody  
Cat. No. 3531  
Co-expression of SARS-CoV-2 Envelope and C5b-9 in Human Lung Tissue from COVID-19 Patient.

## SARS-CoV-2 Membrane Antibody

Product	Cat. No.	Clonality	Host	Tested Applications
SARS-CoV-2 (COVID-19) Membrane Antibody	<a href="#">9157</a> , <a href="#">9165</a>	Polyclonal	Rabbit	E, WB, IHC

## Select NSP Antibodies

Product	Cat. No.
SARS-CoV-2 (COVID-19) Spike NSP2 Antibody	<a href="#">9173</a>
SARS-CoV-2 (COVID-19) Spike NSP5 Antibody	<a href="#">9153</a>
SARS-CoV-2 (COVID-19) Spike NSP7 Antibody	<a href="#">9155</a>
SARS-CoV-2 (COVID-19) Spike NSP8 Antibody	<a href="#">9159</a>
SARS-CoV-2 (COVID-19) Spike NSP9 Antibody	<a href="#">9161</a>

Product	Cat. No.
SARS-CoV-2 (COVID-19) Spike NSP10 Antibody	<a href="#">9179</a>
SARS-CoV-2 (COVID-19) Spike NSP13 Antibody	<a href="#">9181</a> , <a href="#">9183</a>
SARS-CoV-2 (COVID-19) Spike NSP14 Antibody	<a href="#">9185</a>
SARS-CoV-2 (COVID-19) Spike NSP16 Antibody	<a href="#">9271</a>