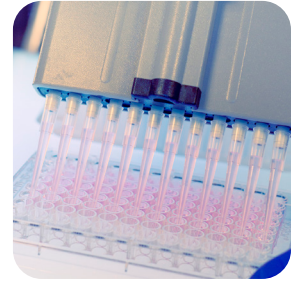




prosci-inc.com



Infectious Disease



HIGH PERFORMANCE ANTIBODIES ... AND MORE

**Broad Antibody Catalog
Extensive Antibody Services**



INFECTIOUS DISEASE

Infectious diseases are illnesses caused by viruses, bacteria, fungi, protozoa or parasites. Some examples of illnesses stemming from these agents are respiratory, gastrointestinal, and sexually transmitted diseases. ProSci offers high performance infectious disease antibodies and related reagents.

ANTIBODIES FOR:

Viruses (e.g. Flu, WNV, SARS, HIV-1, HSV, HPV)

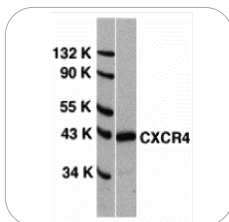
Bacteria (e.g. *E. coli*, *C. trachomatis*, *B. pertussis*)

Fungal (e.g. *Candida*, *Aspergillus*, Aflatoxins)

Parasitic (e.g. *T. gondii*, *D. immitis*)

Protozoa (e.g. *G. lamblia*, *C. parvum*, *E. histolytica*)

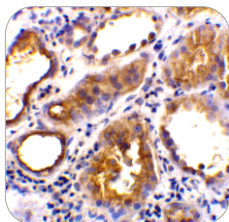
... AND MORE



CXCR4 Antibody

Cat. No. 1009

WB of CXCR4 in HeLa whole cell lysate at 0.5 µg/mL.



ACE2 Antibody

Cat. No. 3215

IHC analysis of human kidney tissue at 2 µg/mL.



TRIAL SIZES AVAILABLE

prosci-inc.com/promotions/trial-size

ProSci ™

Detection Sets

Collection of antibodies and peptides for related targets.

Detection Set	Cat. No.	Components
Avian Flu	PSI-1808	H5N1 (Hemagglutinin & Neuraminidase)
Anthrax	PSI-1811	ATR, Anthrax (PA, Lethal & Edema Factors)
HIV-1 Co-Receptor*	PSI-1818	Bonzo, CCR3, CCR5, CCR8, CXCR4 CX3CR1, CXCR4, DC-SIGN, GPR15
HIV-1 p24	PSI-1851	Reagents for sandwich ELISA
SARS	PSI-1810	ACE2, SARS (Matrix, Spike, & Envelope)
Swine & Seasonal Flu	PSI-1829	H1N1 (Hemagglutinin & Neuraminidase)
West Nile Virus	PSI-1809	WNV (Matrix, Core, & Envelope)

*Contains respective antibodies only

Select Citations

J Immunol (2012) 188:1108-1116. **(CX3CR1)**

J Virol (2011) 85:1214-1223. **(H1N1 Hemagglutinin)**

Blood (2011) 118:5824-5831. **(CCR5)**

Clin Vaccine Immunol (2009) 16:1624-1632. **(RVFV)**

Proc Natl Acad Sci USA (2006) 103:19134-19139. **(TRIM5 alpha)**

Antibody	Cat. No.	Applications	Species
APOBEC3G	3257	E, WB, IHC	H
ATR	3117	E, WB, IHC, IF	H, M, R
Avian Hemagglutinin	3425	E	V
CCR3	1105	E, WB, IHC, IF	H, M, R
CCR5	1112	E, WB, IHC	H
CX3CR1	2093	E, WB, IHC, IF, FACS	H, M, R
DC-SIGN	PM-2348	E, WB, IHC	H
gp120	4777	E, WB	V
GPR15	2101	E, WB	H, M, R
HIV-1 p24	PM-6585	E, WB	V
NAK	2351	E, WB, ICC	H, M
RVFV	4521	E	V
TRIM5 alpha	3249	E, WB, IF	H

... AND MORE



FOR MORE INFECTIOUS DISEASE PRODUCTS
prosci-inc.com/viral-infectious-diseases





prosci-inc.com



CORPORATE HEADQUARTERS

ProSci Incorporated
12170 Flint Place
Poway, CA 92064
USA

CONTACT INFORMATION

Toll Free: (888) 513-9525
Local: (858) 513-2638
Fax: (858) 513-2692
E-Mail: info@prosci-inc.com

HIGH PERFORMANCE ANTIBODIES ... AND MORE

Established in 1998

Over 20,000 Antibodies, Proteins, and other research tools available

Custom Antibody Services available, specializing in Polyclonal, Monoclonal, Rabbit Recombinant Monoclonal, and Single Domain Recombinant Technology