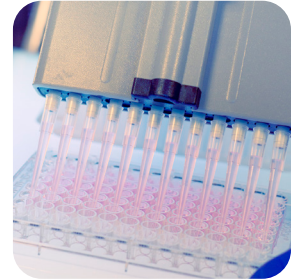




prosci-inc.com



Neurobiology

HIGH PERFORMANCE ANTIBODIES ... AND MORE

Broad Antibody Catalog
Extensive Antibody Services



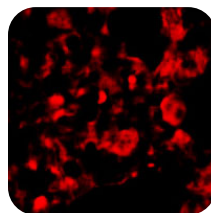
NEUROBIOLOGY

ProSci offers a broad catalog of antibodies, lysates, and slides for neurobiology research from new antibodies for recently identified proteins to established cell signaling targets of continuing interest.

ANTIBODIES FOR:

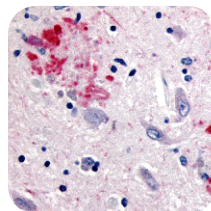
Neural Stem Cell Markers
Neural Signal Transduction
Neurodegenerative Disease
Neuroregeneration
Growth and Development
Neurotransmission
Neural Development
Neuronal Markers

... AND MORE



Slitrk4 Antibody
Cat. No. 4483

Immunofluorescence with slitrk4 antibody in human brain tissue at 20 $\mu\text{g}/\text{mL}$



APP Antibody
Cat. No. 2133

Immunohistochemistry with APP antibody in human brain tissue (Alzheimer's) at 10 $\mu\text{g}/\text{mL}$



TRIAL SIZES AVAILABLE
prosci-inc.com/products

ProSci Ψ TM

Select Detection Sets

Collection of antibodies for a specific pathway or disease.

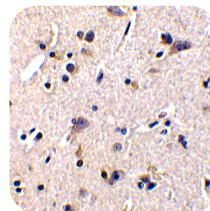
Detection Set	Cat. No.	Components
Grik	PSI-1824	Grik1, Grik2, Grik4, Grik5
SAPAP	PSI-1826	SAPAP1, SAPAP2, SAPAP3
Slit and NTRK-like	PSI-1827	Slitrk1, Slitrk2, Slitrk3, Slitrk4, Slitrk5, Slitrk6

Select Citations

PNAS (2013) 110: 4057-4062. (**Slitrk2, Slitrk4**)
Hum Mol Genet (2012) 21 (20): 4406-4418. (**CRMP1**)
Brain (2012) 135 (9): 2826-2837. (**BACE**)
J Endocrinol (2011) 210: 309-321. (**CAPS2**)
PNAS (2011) 108: 2587-2592. (**SAPAP3**)
Am J Phys Cell Phys (2010) 298: C1353-C1362. (**KLHL1**)
J Biol Chem (2010) 285: 8527-8536. (**PEN2**)
Mol Biol Cell (2010) 21: 1357-1367. (**p23/Tmp21**)
Mol and Cell Biol (2010) 30 (6): 1357-1367. (**UNG1**)
PNAS (2009) 106: 14040-14045. (**FEZ1**)

Neural Cell/Tissue Lysates and Slides

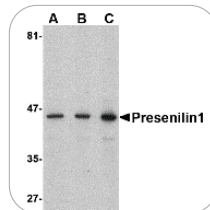
ProSci offers a wide variety of cell/tissue lysates and paraffin slides relevant to neurobiology.



GFR α Antibody
Cat. No. 1133

Brain Tissue Slide
Cat. No. 10-301

IHC with GFR α in human brain tissue at 1 μ g/mL



Presenilin1 Antibody
Cat. No. 4203

Brain Lysate
Cat. No. 1303

WB of Presenilin1 in human brain lysate at (A) 0.5, (B) 1, and (C) 2 μ g/mL





prosci-inc.com



CORPORATE HEADQUARTERS

ProSci Incorporated
12170 Flint Place
Poway, CA 92064
USA

CONTACT INFORMATION

Toll Free: (888) 513-9525
Local: (858) 513-2638
Fax: (858) 513-2692
E-Mail: info@prosci-inc.com

HIGH PERFORMANCE ANTIBODIES ... AND MORE

Established in 1998

Over 20,000 Antibodies, Proteins, and other research tools available

Custom Antibody Services available, specializing in Polyclonal, Monoclonal, Rabbit Recombinant Monoclonal, and Single Domain Recombinant Technology