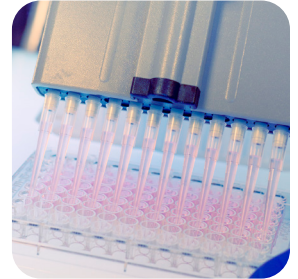




prosci-inc.com



## Stem Cell



**HIGH PERFORMANCE ANTIBODIES ... AND MORE**

**Broad Antibody Catalog  
Extensive Antibody Services**



# STEM CELL

---

Stem cells are undifferentiated cells that have the ability to differentiate into a subset of undifferentiated or differentiated cells. Stem cells are recognized for their therapeutic potential. ProSci offers high performance stem cell antibodies and related reagents.

## ANTIBODIES FOR:

Cancer Stem Cells

Embryonic Stem Cells

Endothelial Markers

Germline Stem Cells

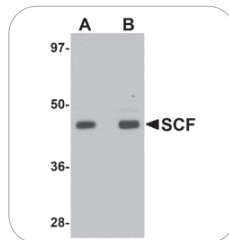
Hematopoietic Progenitors

Mesenchymal Stem Cells

Neural Stem Cells

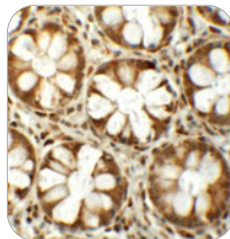
Signaling Pathways (e.g. Hedgehog, Notch, Wnt)

Over 600 Stem Cell Research Tools Available!



### SCF Antibody Cat. No. 5165

WB analysis of SCF in rat brain tissue lysate at (A) 1 and (B) 2 µg/mL.



### SLAMF1 Antibody Cat. No. 6247

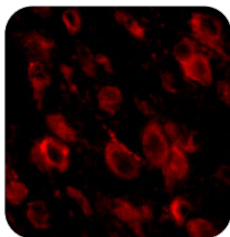
IHC analysis of SLAMF1 in human colon tissue at 5 µg/mL.



**TRIAL SIZES AVAILABLE**

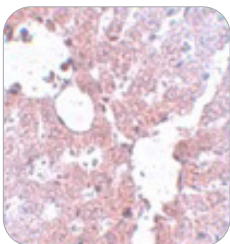
[prosci-inc.com/promotions/trial-size](https://prosci-inc.com/promotions/trial-size)

**ProSci**™



**PD-1 Antibody [7A11B1]  
Cat. No. PM-5177**

IF analysis of PD-1 in mouse brain tissue at 20 µg/mL.



**KLF4 Antibody  
Cat. No. 5603**

IHC analysis of KLF4 in rat liver tissue at 5 µg/mL.

Antibody	Cat. No.	Applications	Species
ATOH78 Antibody	5109	E, WB, IHC	H, M, R
CRB2 Antibody	7155	E, WB	H, M
CXCC5 Antibody	6111	E, WB, IHC, IF	H, M, R
DISP1 Antibody	6629	E, WB, IHC, IF	H, M
ESRRB Antibody	6813	E, WB, IH, IF	H
LIF Antibody	6245	E, WB, IHC, IF	H, M, R
Nanog Antibody	5585	E, WB, IHC, IF	H, M, R
RHBDD1 Antibody	5525	E, WB	H, M
PIWI-L1 Antibody	6029	E, WB, IHC, IF	H, M, R
PLEKHM1 Antibody	5483	E, WB, IHC, IF	H
PRDM16 Antibody	5555	E, WB, IHC, IF	H, M, R
SHROOM1 Antibody	7113	E, WB	H, M, R
ZSCAN4 Antibody	5611	E, WB, IHC, IF	H, M, R

**Create your own detection sets with our convenient trial size antibodies - 50 µL trial sizes available**





prosci-inc.com



#### **CORPORATE HEADQUARTERS**

ProSci Incorporated  
12170 Flint Place  
Poway, CA 92064  
USA

#### **CONTACT INFORMATION**

Toll Free: (888) 513-9525  
Local: (858) 513-2638  
Fax: (858) 513-2692  
E-Mail: [info@prosci-inc.com](mailto:info@prosci-inc.com)

## **HIGH PERFORMANCE ANTIBODIES ... AND MORE**

**Established in 1998**

**Over 20,000 Antibodies, Proteins, and other research tools available**

**Custom Antibody Services available, specializing in Polyclonal, Monoclonal, Rabbit Recombinant Monoclonal, and Single Domain Recombinant Technology**