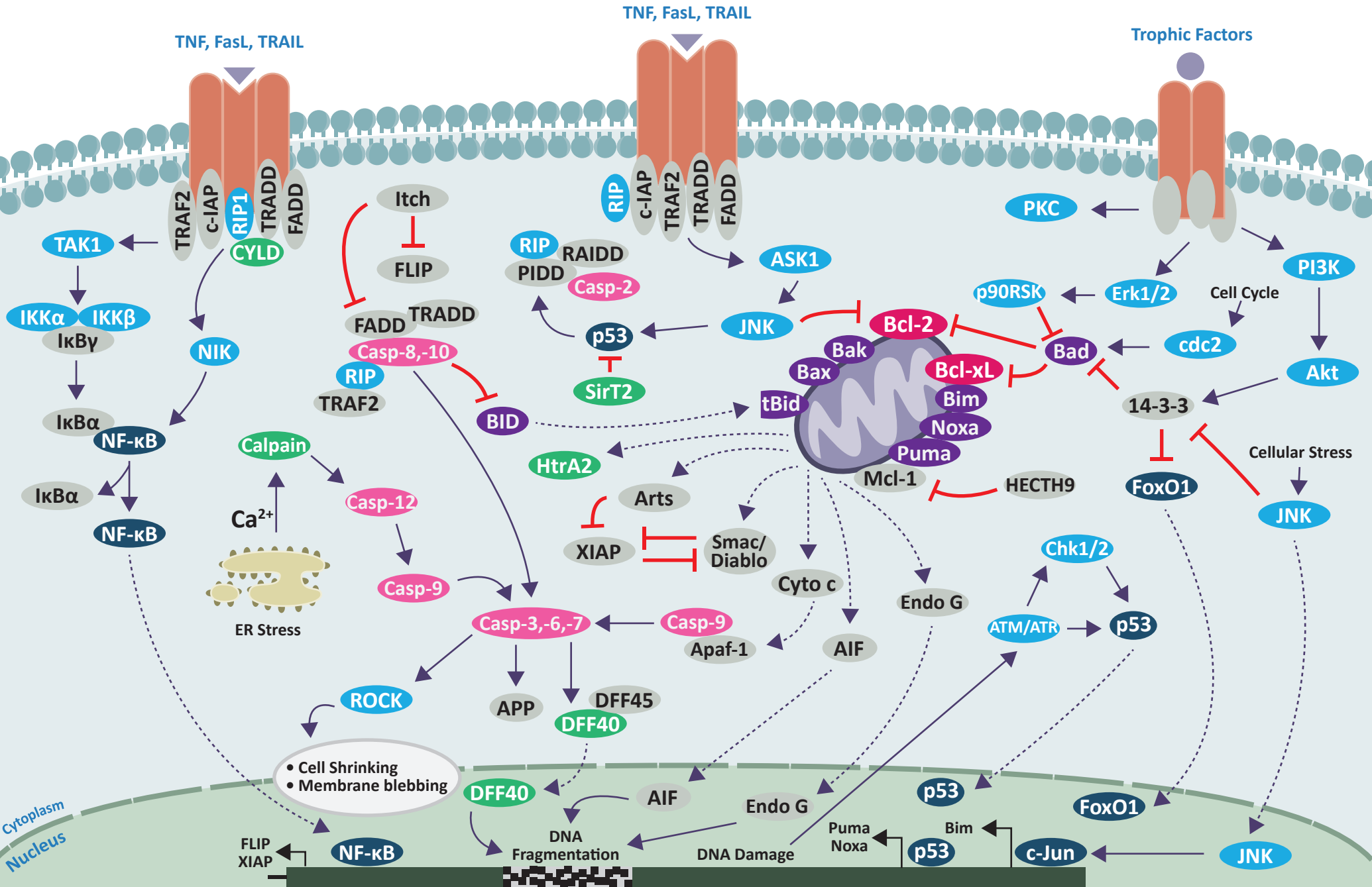


Apoptosis



Apoptosis Related Products

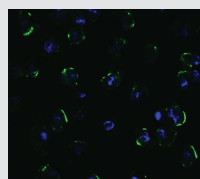
Product	Cat No.	Applications	Species Reactivity
14-3-3 Antibody	50-178	P WB	HU, MS, RAT, OTH
AIF Antibody	2267	P E, IHC-P, WB	HU, MS, RAT
APP Antibody	5143	P E, IF, IHC-P, WB	HU, MS, RAT
ARF-BP1 Antibody	4213	P E, ICC, IF, WB	HU, MS, RAT
ARTS Antibody	3025	P E, IF, IHC-P, WB	HU
ASK1 Antibody	3677	P E, ICC, IF, WB	HU, MS
ATM Antibody	3945	P E, IF, IHC-P, WB	HU
ATR Antibody	3117	P E, IF, IHC-P, WB	HU, MS, RAT
BAD Antibody	3343	P E, IF, IHC-P, WB	HU, MS, RAT
Bak Antibody	3347	P E, ICC, WB	HU, MS
Bax Antibody	3351	P E, ICC, IF, IP, WB	HU
Bcl-2 Antibody	3335	P E, IF, IHC-P, WB	HU, MS
Bcl-xL Antibody	3341	P E, WB	HU
BID Antibody	3353	P E, IF, IHC-P, WB	HU, MS
Bim Antibody	3405	P E, ICC, IF, WB	HU, MS, RAT
Capase-2 Antibody	3447	P E, ICC, WB	HU, MS, RAT
Capase-3 Antibody	3445	P E, IHC-P	HU
Capase-6 Antibody	3469	P E, ICC, IF, WB	HU
Capase-7 Antibody	3467	P E, IHC-P, WB	HU, MS, RAT
Capase-8 Antibody	3473	P E, ICC, IF, IHC-P, WB	HU, MS, RAT
Capase-9 Antibody	2073	P E, IP, WB	HU, MS, RAT
Capase-10 Antibody	1128	P E, ICC, IF, WB	HU
Capase-12 Antibody	2325	P E, IHC-P, WB	HU, MS, RAT
CDC2 Antibody	31-034	P E, WB	HU
CHK1 Antibody [2G11D5]	32-135	M E, WB	HU
Chk2 Antibody	2391	P E, ICC, IF, WB	HU, MS, RAT
CYLD Antibody	45-444	P E, WB	MS, RAT
DFF40 Antibody	2155	P E, ICC, WB	HU, MS, RAT
DFF45 Antibody	1141	P E, ICC, IF, WB	HU
DR4 Antibody	1139	P E, ICC, IF, IHC-P, WB	HU
DR5 Antibody	2019	P E, ICC, IF, IHC-P, WB	HU, MS
EndoG Antibody [7G1C10]	PM-4577	M E, WB	HU, MS, RAT
ERK1/2 Antibody [SB46b]	99-783	M E, IHC-Fr, IHC-P	HU
FADD Antibody [1A11]	99-750	M Flow	HU

Product	Cat No.	Applications	Species Reactivity
FLIP Antibody	1161	P E, Flow, ICC	HU, MS, RAT
FoxO1 Antibody	5811	P E, ICC, IF, WB	HU, MS, RAT
IkB a (Ab 42) Antibody	79-350	P IHC, WB	HU, MS, RAT
IKK alpha Antibody	2115	P E, ICC, IF, WB	HU
IKK beta Antibody	2121	P E, ICC, IF, WB	HU
ITCH Antibody	7645	P E, WB	HU, MS, RAT
Mcl-1 Antibody	3447	P E, ICC, IF, WB	HU, MS, RAT
NF-kB Antibody	36-342	P ICC, IP, WB	HU, MS
NIK Antibody	1129	P E, ICC, IF, WB	HU
Noxa Antibody	2437	P E, IF, IHC-P, WB	HU, MS, RAT
OMI Antibody	3051	P E, IF, IHC-P, WB	HU, MS
p53 Antibody [TP53/1739]	33-856	M Flow, IF, IHC-P, WB	HU
p90RSK (AB 352) Antibody	79-334	P IHC, WB	HU, MS, RAT
PRRT2 Antibody	7295	P E, IF, IHC-P, WB	HU, MS, RAT
PUMA	3043	P E, ICC, IF, WB	HU, MS
RAIDD Antibody	1117	P E, ICC, IF, IHC-P, WB	HU, MS, RAT
RIP1 Antibody	3291	P E, IHC-P	HU
RIP3 Antibody	2283	P E, IF, IHC-P, WB	HU, MS, RAT
RIPK1 Antibody	5389	P E, IF, IHC-P, WB	HU, MS, RAT
Rock1	6295	P E, ICC, IF, WB	HU, MS, RAT
Rock2	6297	P E, IF, IHC-P, WB	HU, MS, RAT
SIRT2 Antibody	4485	P E, IF, IHC-P, WB	HU, MS, RAT
Smac/Diablo Antibody [2D12]	99-765	M Flow, IHC-Fr, WB	HU
Survivin Antibody	2235	P E, ICC, IF, WB	HU
TACE Antibody	1131	P E, WB, ICC, IF, FACS	HU, MS, RAT
TAK1 Antibody	3385	P E, IF, WB	HU, MS, RAT
TNFSF4	7243	P E, IF, IHC-P, WB	HU, MS, RAT
TRADD Antibody	56-146	P Flow, IF, IHC-P, WB	HU
TRAF2 Antibody	3663	P E, IF, IHC-P, IP, WB	HU, MS, RAT
TRAIL Antibody	1113	P E, IF, IHC-P, WB	HU
XIAP Antibody	3331	P E, IF, IHC-P, WB	HU, MS
TRAIL and Receptor Detection Set	PSI-1801	TRAIL, DR4, DR5, DcR1, DcR2	
Inhibitor of Apoptosis Detection Set	PSI-1815	clAP, ILP-2, Livin, AIP, Survivin, XIAP	
Death Domain Receptor Detection Set	PSI-1825	SAPAP1, SAPAP2, SAPAP3, SAPAP4	

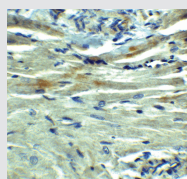
KEY: ●●●●● Antibody color in pathway

● Antibody not displayed in pathway

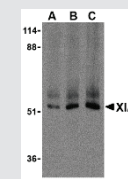
ProSci's Product Highlights



DR5 - Cat No: 2019
Host - Rabbit (Polyclonal)
Applications - E, ICC, IF, IHC-P, WB
Species Reactivity - HU, MS



PD-L1 - Cat No: 4059
Host - Rabbit (Polyclonal)
Applications - E, Flow, IF, IHC-P, WB
Species Reactivity - HU, MS, RAT



XIAP - Cat No: 3331
Host - Rabbit (Polyclonal)
Applications - E, IF, IHC-P, WB
Species Reactivity - HU, MS