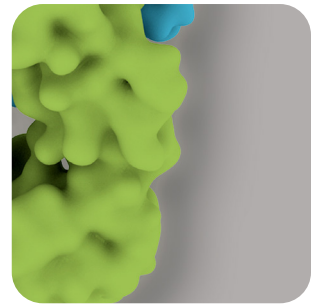
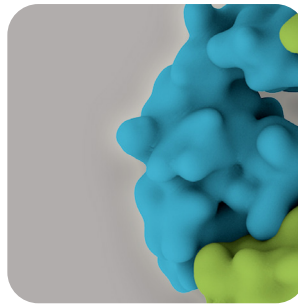
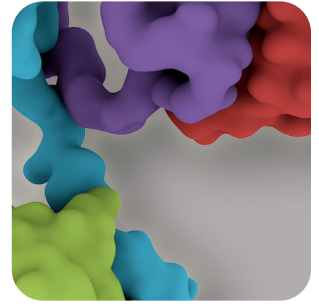
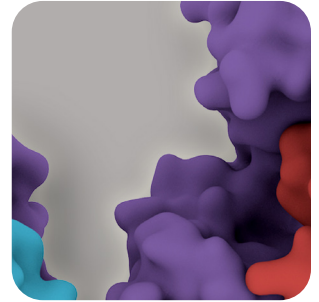
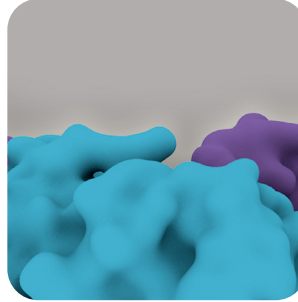




Custom Antibody Services





Company Overview

ProSci Incorporated is constantly adding antibodies and recombinant proteins to the product catalog to better serve biomedical researchers. Through our innovative approach to customer care developed since 1998, we have helped researchers find the right and best tools by adding to our comprehensive product catalog and relying on our expert custom antibody services.



Our experienced Research and Development team takes great care to assure that our antibody services are performed efficiently in order to offer the highest quality products.

ProSci's own researchers focus on the development of new antibodies for the detection of novel targets, and have brought the first commercially available antibodies to market for H5N1, H1N1, SARS, and phospho-SAMHD1.

At ProSci, **the customer comes first**. We always tailor our offering around your needs. Here is what some of our customers are saying about us:

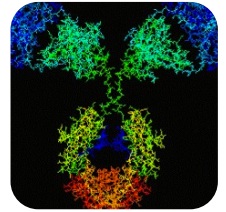
"The entire team - customer service, technical staff, and purchasing department are **flexible and work with us no matter what the obstacle.**"

"I am grateful for the **intimate and punctual customer service**, as well as their **willingness to tailor individual services to the customer's needs.**"

"The service is **great and the antibodies speak for themselves.**"

"We worked with ProSci to develop an antibody phage display library from which candidates could be selected. We were **impressed with the scientific expertise ProSci brought to our project** as well as the attention to detail given at every juncture. Looking forward to future collaboration with them!"



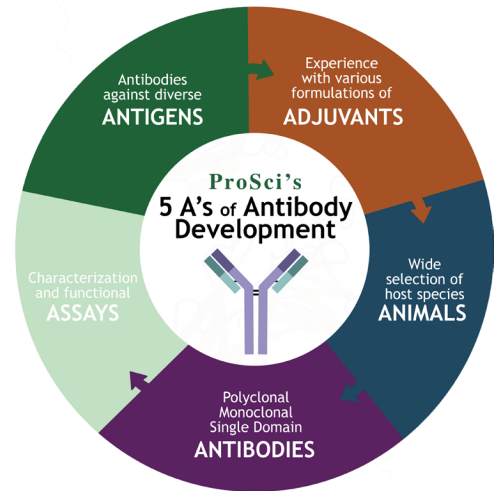


ProSci's 5 A's of Antibody Development

Antibody development is a multi-faceted process that begins with the **antigen**: the target you wish to develop antibodies against.

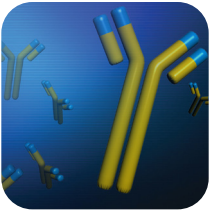
The appropriate **adjuvant** is then selected in order to elicit and amplify an immune response. The antigen is then injected into an appropriate host **animal**, carefully chosen according to project requirements.

Antibodies are then collected and chosen according to functional requirements. Once produced, antibodies are characterized through various **assays** to determine basic properties and functions.

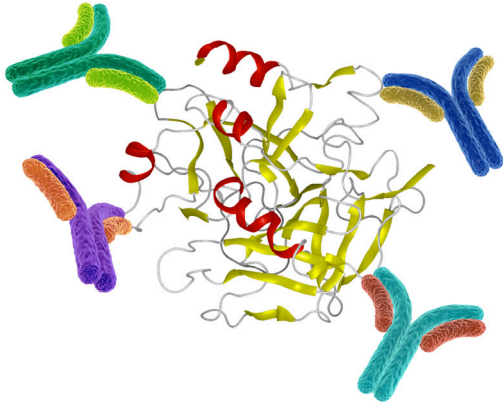


<p>Antigen</p> <p>The nature of the antigen is an important consideration when choosing a method of antibody development. Characteristics such as size and immunogenicity are important components.</p>	<ul style="list-style-type: none"> • Small Molecules • Carbohydrates • Antibody Variable Region (idiotype) • Proteins • Peptides
<p>Adjuvant</p> <p>The magnitude of the immune response is a crucial factor in antibody generation and production. Adjuvants serve as an immunostimulatory agent during immunization.</p>	<ul style="list-style-type: none"> • Freund's (CFA, IFA) • Aluminium Salts • Toll-Like Receptor Agonists
<p>Animals</p> <p>The antibody response to a given antigen varies between species; each species is characterized by advantages and limitations.</p>	<ul style="list-style-type: none"> • Rabbit • Chicken • Mouse • Llama • Rat • Guinea Pig • Goat
<p>Antibody</p> <p>The optimal type of antibody development is determined based on stipulations of size and quantity, as well as specificity and affinity.</p>	<ul style="list-style-type: none"> • Polyclonal • Single Domain • Monoclonal
<p>Assay</p> <p>The physical and functional properties of produced antibodies can be established through various assays.</p>	<ul style="list-style-type: none"> • Western Blot • Functional Assays • ELISA • IHC • ICC





Polyclonal Antibody Services



Polyclonal Antibodies

Mixture of immunoglobulins and subclasses which recognize multiple epitopes with relatively high affinity for the given antigen.

Features and Benefits

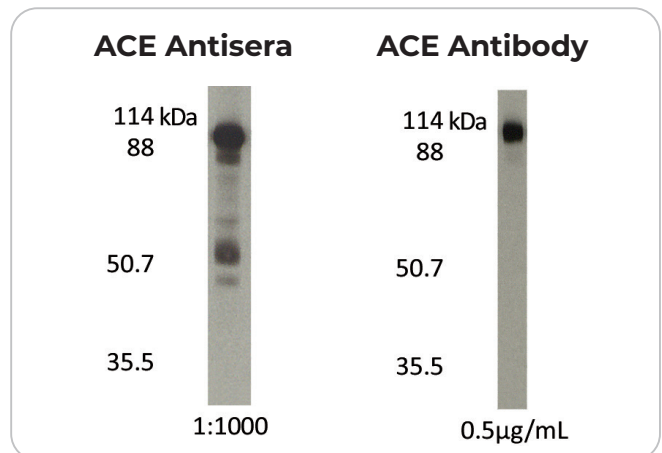
- Quick and inexpensive to produce
- High affinity
- Multiple host species available

Convenient Polyclonal Packages Available

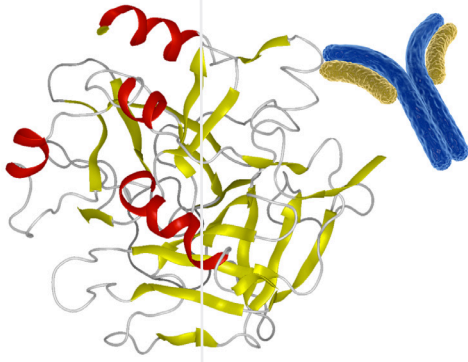
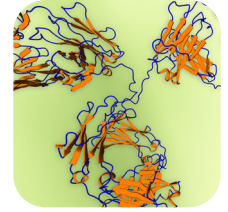
	Serum	Peptide	Purified
Antisera Schedule	✓	✓	✓
Peptide Synthesis		✓	✓
Peptide Conjugation		✓	✓
ELISA Report		✓	✓
Affinity Purification			✓

Additional Services Available

- Purify Additional Sera - Available for all Packages
- Modification-Specific Antibodies (e.g. phospho)
- Peptide Cocktail
- Additional ELISAs
- Antibody Labeling



Monoclonal Antibody Services



Monoclonal Antibodies

Homogenous antibodies which recognize one single epitope. In many cases, this results in significantly less background than polyclonal antibodies.

Features and Benefits

- High specificity
- Lot-to-lot consistency
- Unlimited quantity and availability

I. Hybridoma Development Process

Standard mouse monoclonal antibody generation begins with hybridoma development in three phases:



II. Monoclonal Antibody Production

Ascites Production

In vivo monoclonal antibody production allows for cost-effective large scale production. Purification with protein G or A also available.

In Vitro Production

Our methods have demonstrated 5-25 fold increases in yields over conventional monoclonal antibody cell culture techniques. Serum and serum-free medium formulations available. Purification with protein G or A also available.

Additional Services Available

- Additional ELISA Screening
- Additional Final Clones
- Final Clone Isotyping
- In vitro production
- Endotoxin testing and removal
- Antibody Sequencing
- Affinity Measurement
- Flow Cytometry Screening

Special Antibody Development

- Idiotype
- Single Amino Acid Mutations
- Post Translational Modification
- Small Molecules
- Cell Surface Proteins
- Monoclonal Antibody Pairs





CORPORATE HEADQUARTERS

ProSci Incorporated
12170 Flint Place
Poway, CA 92064
USA

CONTACT INFORMATION

Toll Free: (888) 513 9525
Local: (858) 513 2638
Fax: (858) 513 2692
E-Mail: info@prosci-inc.com

HIGH PERFORMANCE ANTIBODIES ... AND MORE

Established in 1998

Over 20,000 Antibodies, Proteins, and other research tools available

**Custom Antibody Services available, specializing in Polyclonal, Monoclonal,
Rabbit Recombinant Monoclonal, and Single Domain Recombinant Technology**